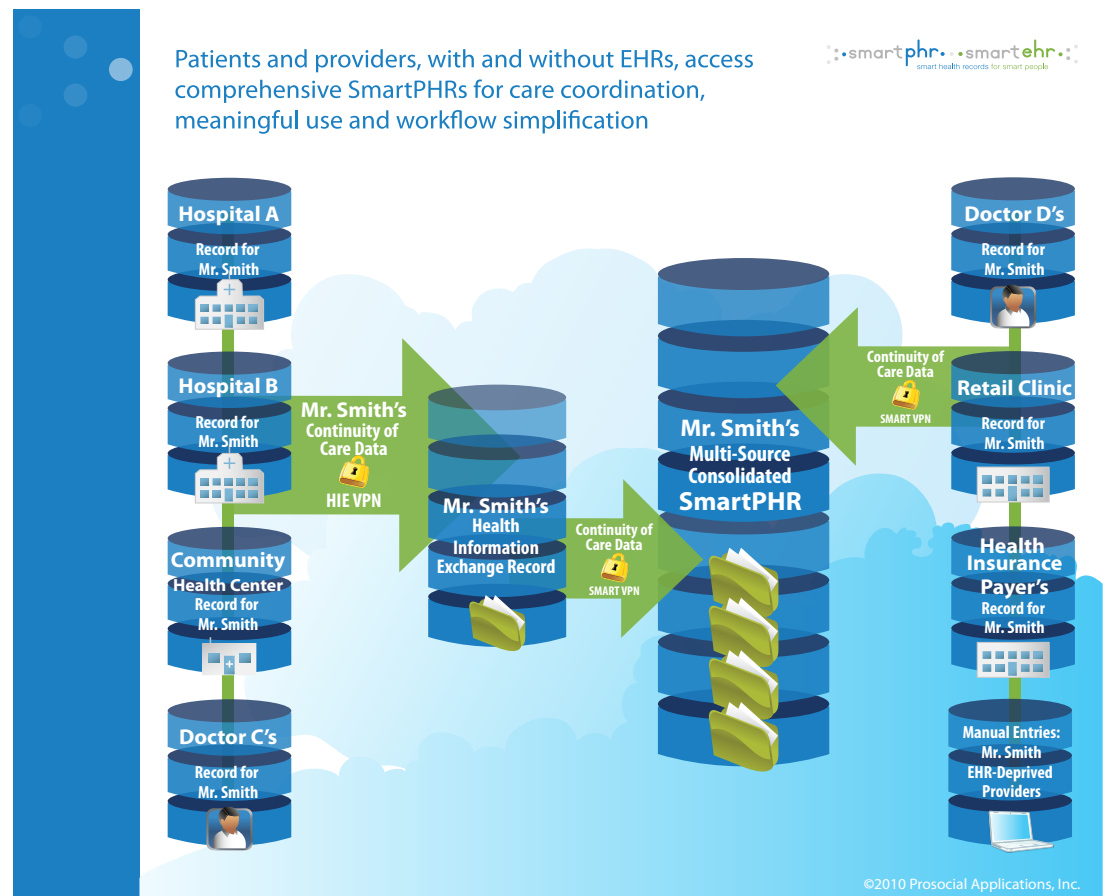




## The SmartHIE™

- Delivers rights-managed care coordination to Medicaid, Medicare and privately insured patients and employees
- Harmonizes, automates, and enforces HIPAA, HITECH, FCC, SAMHSA, state and local health information exchange policies
- Lets patients and providers transfers alerts, electronic files, medical images, structured data between web-connected computer hardware and software platforms
- Gives patients, providers, case managers, and payers convenient, affordable mobile-device access to data warehouses and record amalgamators



The interoperable SmartPHR Platform is a ready-to-use patient- and provider-facing front end for your health information exchange (HIE).

The platform exchanges human- and machine-readable continuity of care documents (CCDs).

The platform consolidates and autopopulates patient records, per patient privacy preferences, from the:

- Health information exchange (HIE) record aggregator
- Electronic health records of providers who participate in the HIE
- Electronic health records of providers who do not participate in the HIE
- Web-connected and mobile device input of patients
- Web-connected and mobile device input of providers without electronic health records

With the platform, providers coordinate health, mental health, substance abuse, and safety-net services to shared patients, avoiding redundant data entry, and reconciling overlapping initiatives including:

- Accountable Care Organizations
- Beacon Communities
- Healthcare Workforce Development
- Medicaid Modernization and Expansion
- Medical Homes for the Chronically Ill and Underserved
- Regional Extension Centers (RECs)

Eligible Medicaid and Medicare professionals, with and without native EHRs, can select the platform's SmartEHR User Authorization Module for automated support of these meaningful use requirements:

- Access control
- Accounting of disclosures (optional)
- Assign a unique name/number for identification
- Audit log
- Authentication
- Automatic log-off
- Encryption when exchanging information
- General encryption
- Integrity
- Print all or specific recorded information
- Provide alerts based on user-defined values

Eligible Medicaid and Medicare professionals, with and without native EHRs, can select the platform's SmartEHR Care Coordination Module for automated support of these meaningful use requirements:

- Advance directives
- Automate quality measure calculation
- Body mass index
- Calculate and submit clinical quality measures
- Clinical decision support
- Electronic copy of discharge instructions
- Electronic copy of health and discharge information

- Emergency access
- Exchange clinical information and patient summary record
- Maintain active medication allergy list
- Maintain active medication list
- Maintain up-to-date problem list
- Patient reminders
- Patient specific education resources
- Plot and display growth charts
- Record demographics
- Smoking status
- Timely access to patient record
- Vital signs

#### Talk to an HIE Expert

- If your HIE has an interoperable record aggregator in place that speaks HL7, we can bolt the SmartPHR Platform on to the front end in collaboration with HIE technical specialists.
- For HIEs in the early stages of formation, we offer end-to-end interoperability, record consolidation, and end user services.
- After set-up, an annual Smart PHR Platform subscription could cost your HIE a dollar or less per patient record, depending on the number of patients your HIE serves.
- Your HIE can cover set up and subscription costs if you choose to share revenues with us when end users purchase value-add applications, such as iPhone and iPad access. To talk to an HIT implementation expert who has advised 26 CHINs, RHIOs, and HIEs over 40 years, send an email to [info@smarthealthrecords.com](mailto:info@smarthealthrecords.com).